

SNUG homes

OUR APPROACH

SNUG Homes **empower** people to up-skill and take ownership of their future home. It makes things as **simple** as possible by providing a structural shell constructed from **pre-fabricated** modules, which can then be **self-finished** internally and externally to suit individual requirements.

The SNUG Home is an **innovative** approach to the housing market, with community integration at the core. Joining a SNUG homes custom build project is not only an opportunity for people to build their own home, but also to learn new skills, create new jobs and forge a strong community.



View of timber clad 'Garden' SNUG option

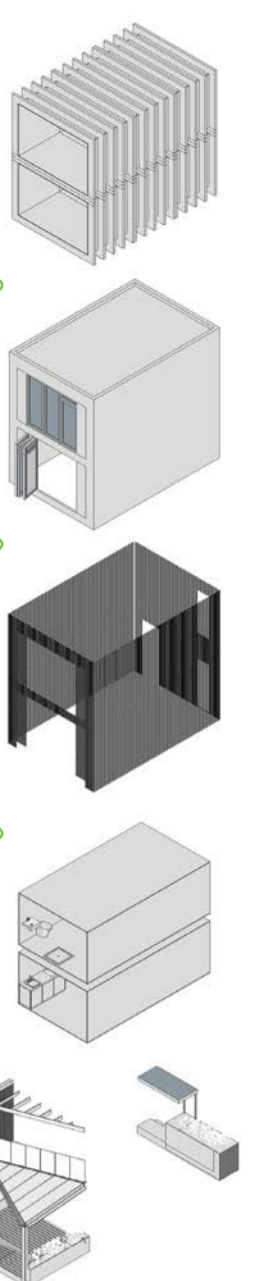
Timber I-beams are combined to create open modules of 2.7 x 4.5m clear space, forming structurally sound units which can be self-finished to suit requirements. The 300mm wall structure provides flexibility of insulation material to achieve U-values between 0.10 - 0.15 W/m²K. The 200mm floor structure limits the depth of stacked units.

Racking strength can be provided by the internal or external sheathing. Appropriate boards can be selected to the owner's preferences. The open modules allow for flexibility of openings at either end to suit the layout, design and planning requirements.

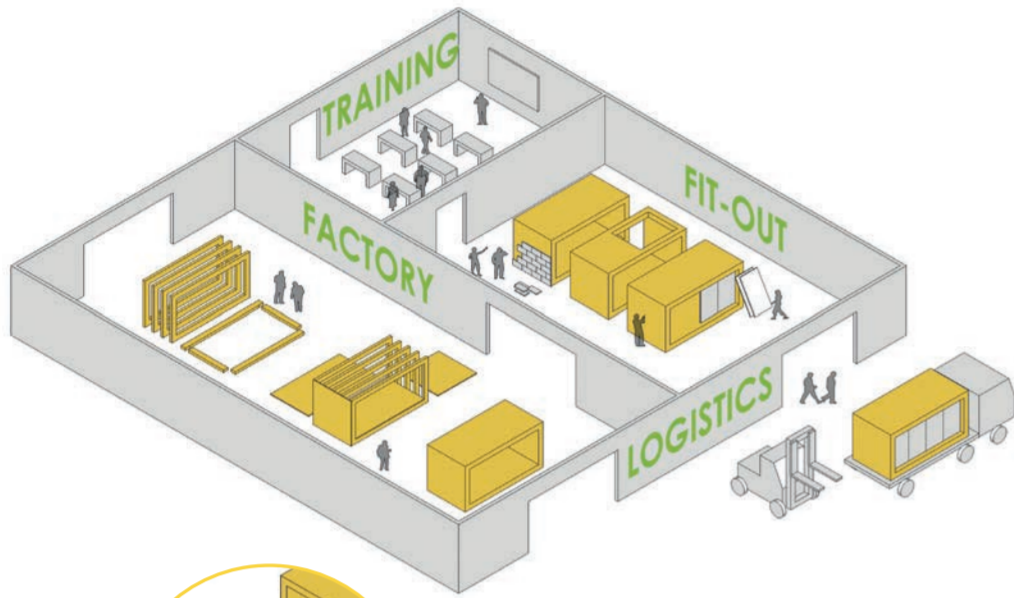
The timber frame structure allows for a wide range of external finishes. Cladding options can be selected to suit nearly any context and budget from reclaimed timber to brick slips. Modules will have an integrated ring beam and sit on screw piles with a ventilated void beneath the suspended and insulated ground floor.

Internal layouts are free from any restrictions allowing complete freedom to the owner. A suite of Building Control approved solutions can be provided. Simple everyday solutions can be installed for Heating, hot-water and ventilation; a small gas system boiler, extractor fans & trickle ventilation.

The completed basic modules can be customised to provide optional extras such as bike and bin storage or balconies, terraces and brise-soleils. Solar PV and Solar Thermal panels can be designed into the units to reduce the energy demand of the homes.



CONSTRUCTION: Community Hub Housing Factory



Factory & Training

DESIGN & CONSTRUCTION

The design brief for the SNUG home, is **flexibility** and **adaptability**, but most importantly it should inspire and encourage people to get hands on with the design and build of their home.

The structural modules are constructed by the SNUG team within the controlled environment of a **Community Hub Housing Factory**. Residents can choose the number, size and arrangement of modules for the size of home they need and choose the **factory self-finish option** combining construction skills training & support for the resident to complete the modules within the security of the factory setting. **Part-finished modules** can also be delivered to site for residents to complete themselves.

Manufacturing the structural modules off site, provides benefits such as **efficiency, quality, waste reduction** and **economies of scale**.

Combined with the **creativity** and **home-grown** nature of the self-build finish, the SNUG Home product offers home owners the opportunity to sustainably craft their own home in an **inventive, affordable** manner.

MEETING NEEDS

Ever **increasing house prices** and a shortage in supply of **affordable dwellings** are making it increasingly difficult for people to own a home and even when they can, the **choice** is limited.

We believe the SNUG Home ethos of combining pre-fabrication and self-build brings **ownership** and **choice** to the large number of people currently closed out of the housing market. The process makes self-build the more **achievable** and creative way for people to get on the housing ladder.

The SNUG Home attracts a wide age and demographic, from the young who don't want or can't get a 30-year mortgage, to an older generation of homeowners who want to downsize and simplify.

ADAPTABILITY

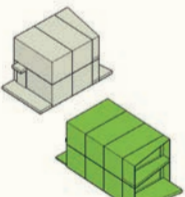
The concept evolved from a desire to give people the chance to achieve **compact, well designed, quality houses** that they could really call a home.

The system and process is also **easy to use** to create semi-detached or larger homes, terraces or apartment blocks by combining or stacking the modules, extending the concept well to **group projects** or more **collective** ways of living, such as co-housing, where homes can be smaller because people also have access to shared living spaces.

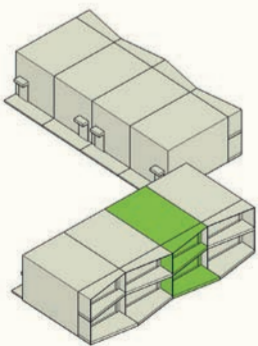
Site Assembly

CONFIGURATION

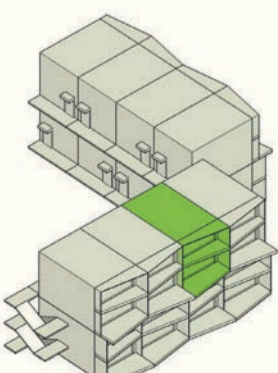
Compact Unit
44m²



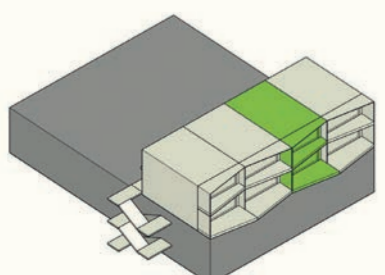
Standard Unit
66m²



Terrace

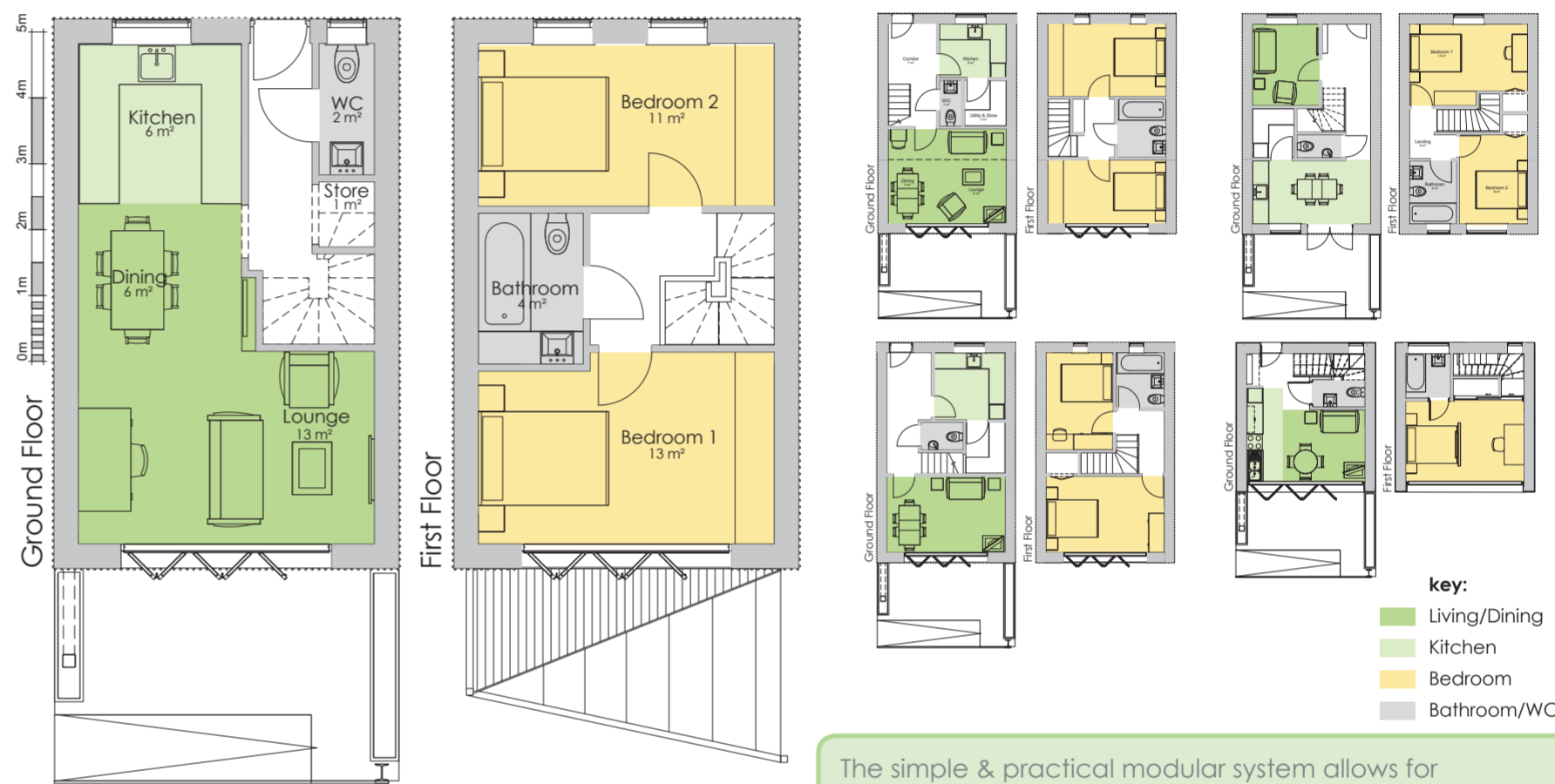


Stackable Maisonette



Stackable Maisonette - Mixed Use

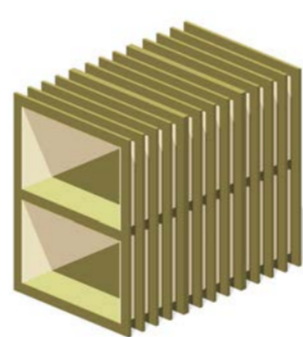
CUSTOMISATION: Layout



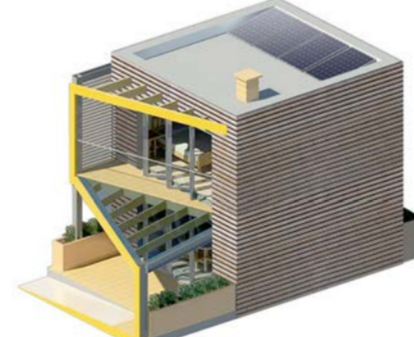
key:
Living/Dining
Kitchen
Bedroom
Bathroom/WC

The simple & practical modular system allows for flexibility of layouts & sizes, including a 1bed option

CUSTOMISATION: Style & Materials



Base modules combine to form flexible volumes



Contemporary style / Timber cladding



Traditional style / Brick slips & pitched roof module



Contemporary style / Render finish & mono-pitch roof module

SNUG Homes can be purchased as a finished product or as structure-only, allowing for a complete customization of internal and external finishes

SNUG: flexible, affordable & above all desirable.....



Versatile and lightweight, a key component for urban regeneration



The system can adopt a wide range of external finishes making it adaptable to local context